

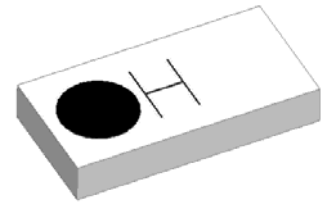
2.4GHz 3216 Chip Antenna: ANT3216R24003KM1

Applications:

WLAN, 802.11b/g, Bluetooth, etc...

Features

SMD, high reliability, ultra compact, Omni-directional...



Part number

ANT 3216 R 2400 3K M1
(1) (2) (3) (4) (5)

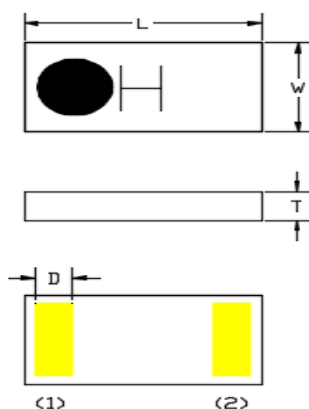
(1) Size Code	3.2x1.6mm
(2) Packing	Tape and reel
(3) Frequency	2.4GHz
(4) Packing Number	3K
(5) Code	M1

Electrical Specification

Working Frequency Range	2400 ~2484 MHz
Peak Gain	2.5 dBi (Typ.)
Impedance	50 Ohm
VSWR	2.5 (Max)
Polarization	Linear
Azimuth Beamwidth	Omni-directional
Operation Temperature(°C)	-40 ~85°C

The specification is defined on EVB.

Dimension and Terminal Configuration



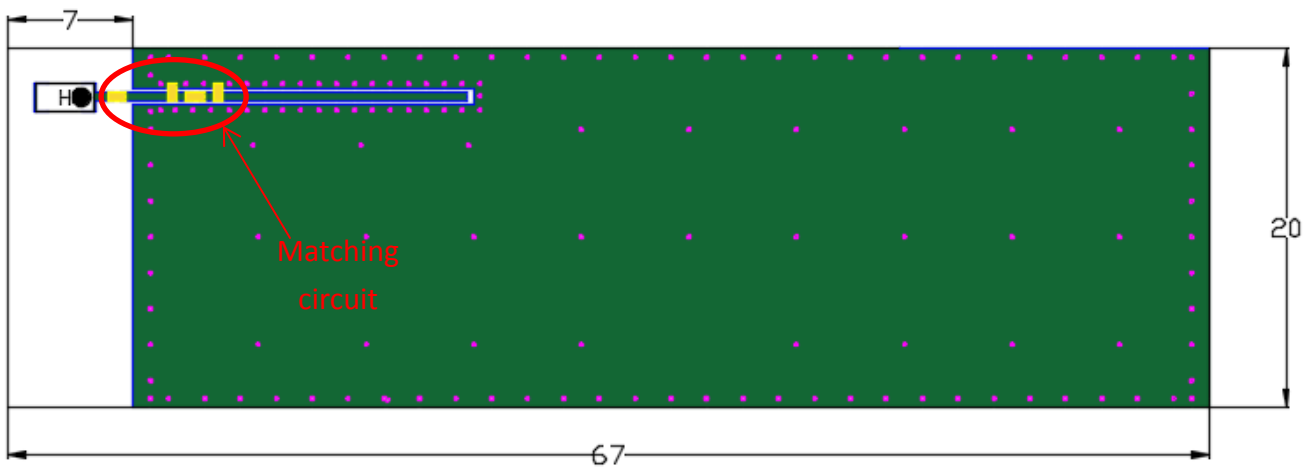
Dimension (mm)	
L	3.20±0.15
W	1.60±0.15
T	0.55±0.10
D	0.50±0.15

No.	Terminal Name
1	Feeding
2	Soldering

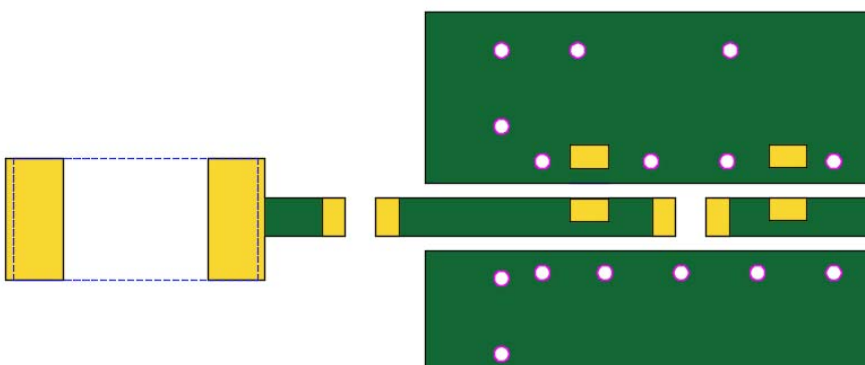
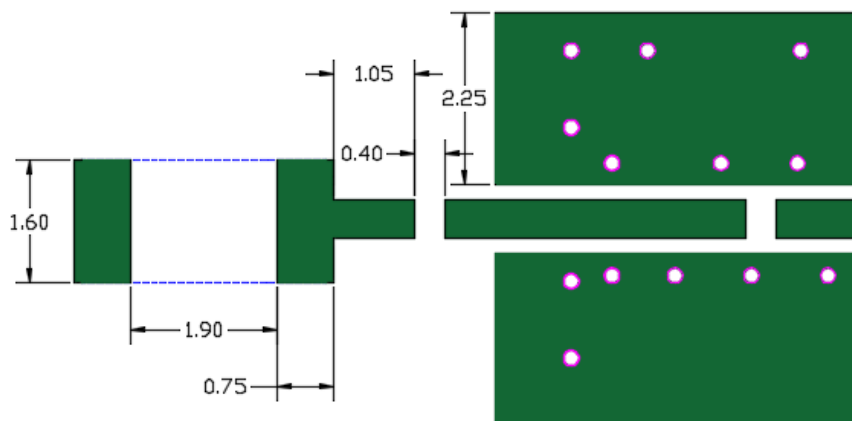
2.4GHz 3216 Chip Antenna: ANT3216R24003KM1

Evaluation Board Reference


PCB Dimension




Antenna Layout Reference



Unit : mm

 : Chip Antenna

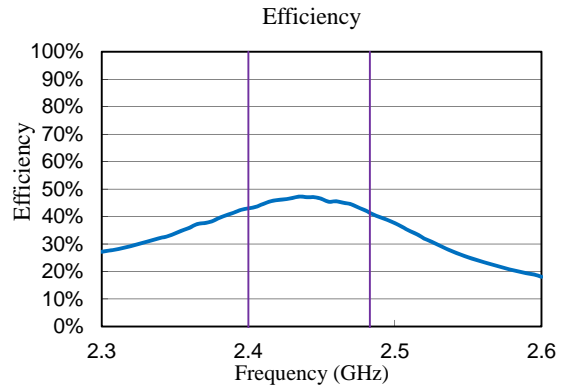
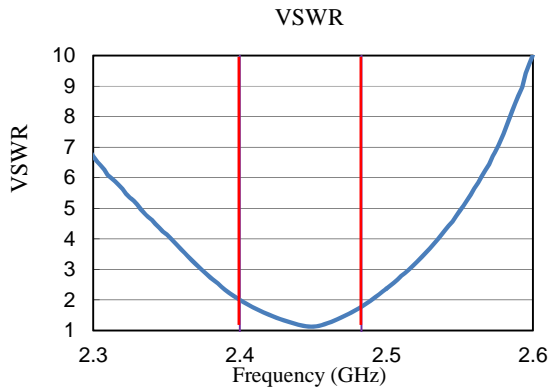
 : Land Pattern

2.4GHz 3216 Chip Antenna: ANT3216R24003KM1

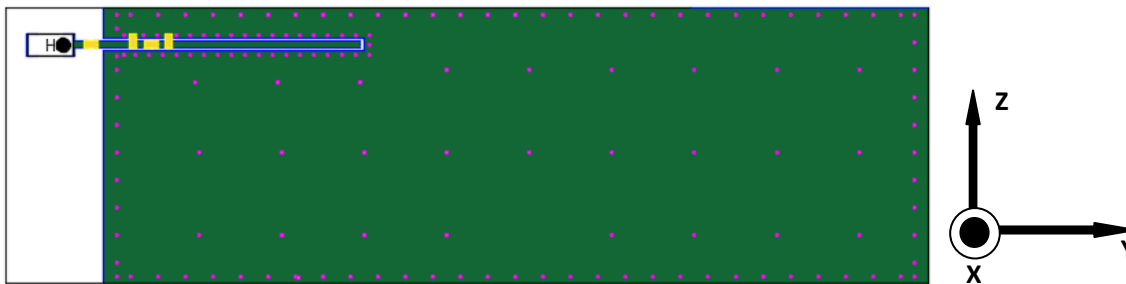
Electrical Characteristics

Return Loss & Radiation

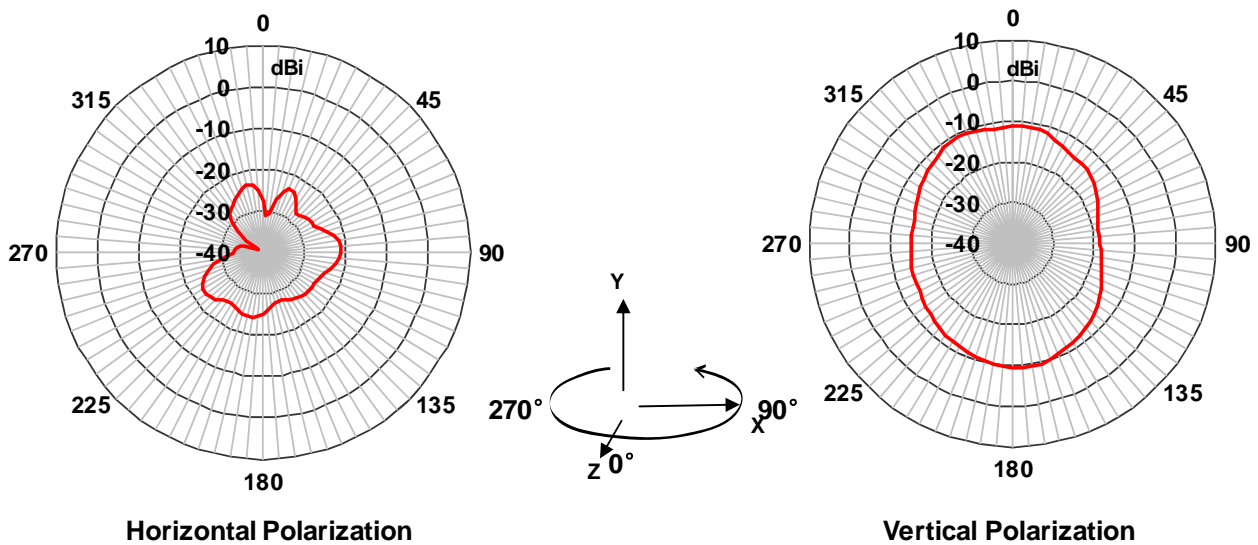
VSWR&Efficiency



Radiation Pattern

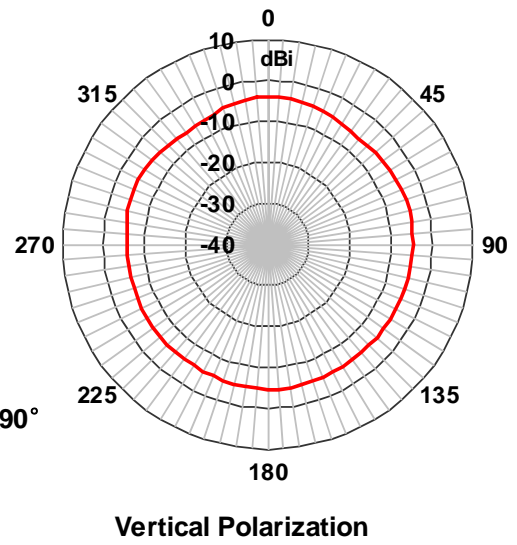
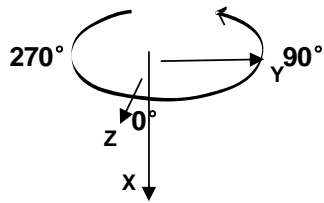
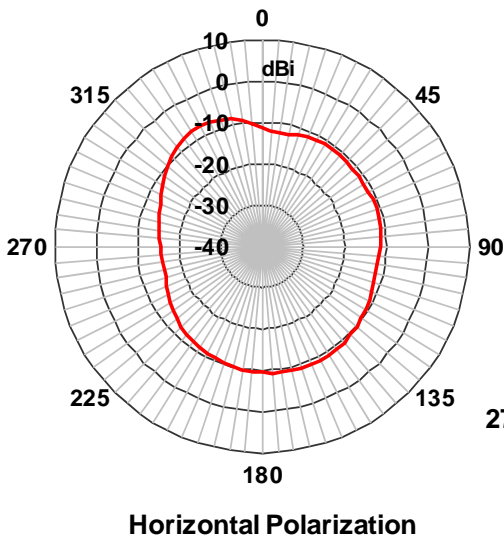


ZX-Plane

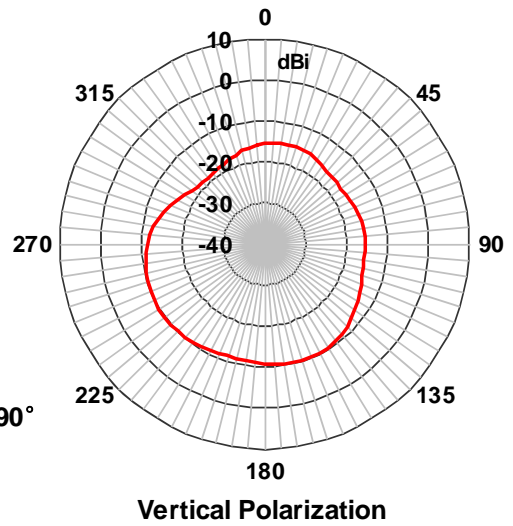
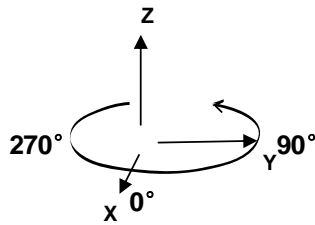
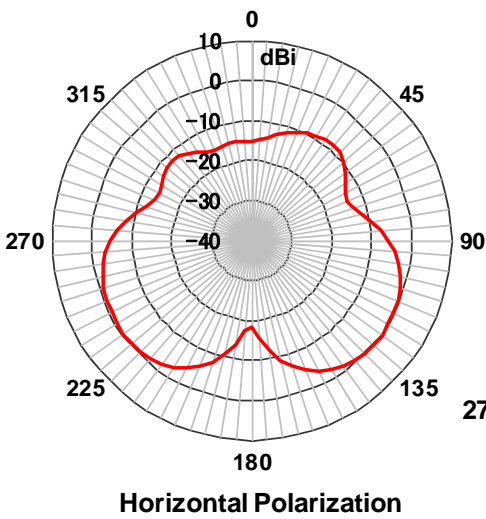


2.4GHz 3216 Chip Antenna: ANT3216R24003KM1

ZY-Plane



XY-Plane

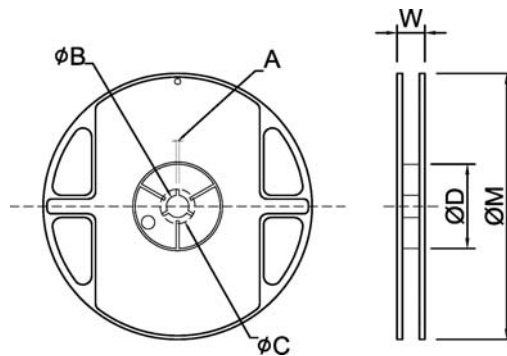


2.4GHz 3216 Chip Antenna: ANT3216R24003KM1

Taping Specifications

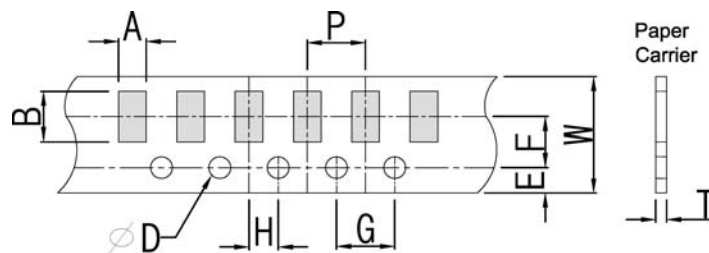
Reel and Taping Specification

Reel Specification



TYPE	SIZE		A	ϕB	ϕC	ϕD	W	ϕM
3216	7"	3K/Reel	2.0±0.5	13.5±1.0	21±1.0	60±1.0	11.5±2.0	178±2.0

Taping Specification

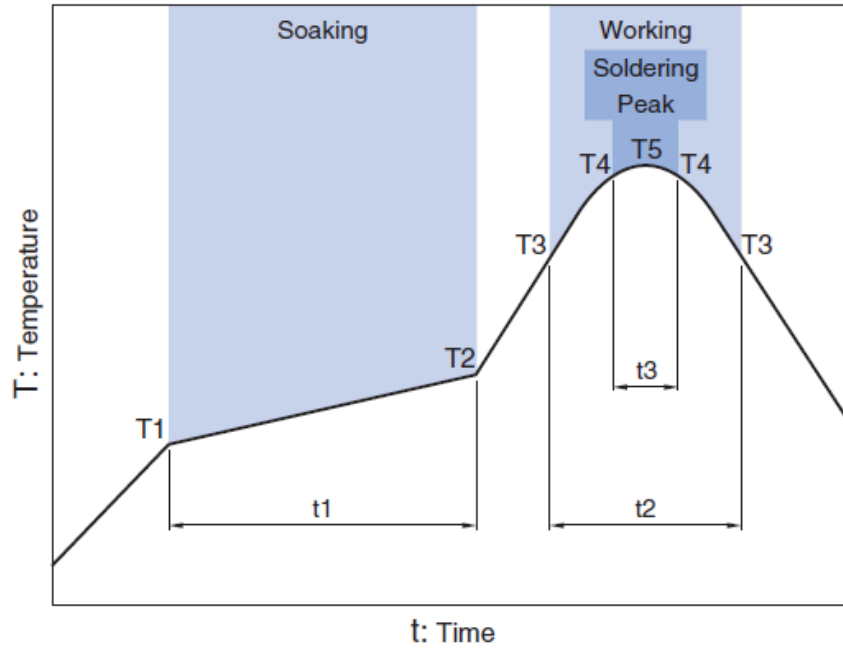


Packaging	Type	A	B	W	E	F	G	H	T	ϕD	P
Paper Type	3216	1.90±0.20	3.50±0.20	8.0±0.20	1.75±0.10	3.5±0.05	4.0±0.10	2.0±0.05	0.75±0.10	1.50 +0.10 -0	4.0±0.1

2.4GHz 3216 Chip Antenna: ANT3216R24003KM1

Recommended Reflow Profile

Pb free solder



Soaking		Working		Soldering		Peak	
Temp.	Time	Temp.	Time	Temp.	Time	Temp.	
T1	T2	t1	T3	t2	T4	t3	T5
150°C	180°C	60 to 120sec	230°C	more than 30sec	247 to 253°C	within 10sec	260°C Max.